

Reaction Torque Sensors

01173 Series

BEARING DRAG TORQUE SENSOR

The 01173 series bearing drag torque sensor is used to measure bearing drag torque while applying very high radial loads. Bearings requiring these stringent evaluations include roller, journal, and ball bearings and are used in many areas including the automotive and aerospace industries. This sensor is also available as a two load cell combination to further increase the radial load capacities while still resolving very low torque levels.

Various torque ranges and adapter fixtures can be accommodated with our custom engineering capabilities. Please contact our factory for further information.



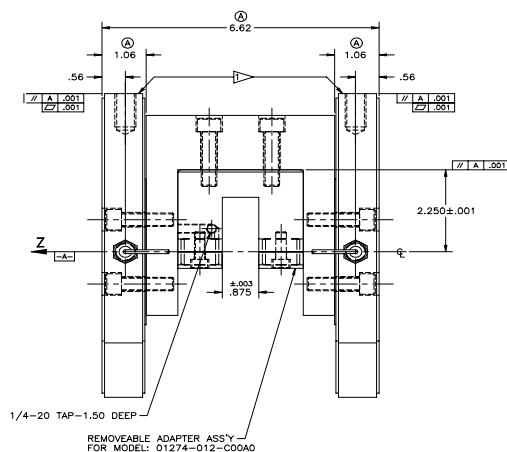
Tandem mounted torque sensors

SPECIFICATIONS

Typical full scale torque levels 100in-lbs to 500in-lbs
 Typical thrust loads applied 1500lbs to 10,000lbs
 Hysteresis 0.25% of full scale
 Non-linearity 0.25% of full scale
 Compensated temperature range +70 to 170°F
 Useable temperature range -65 to +250°F

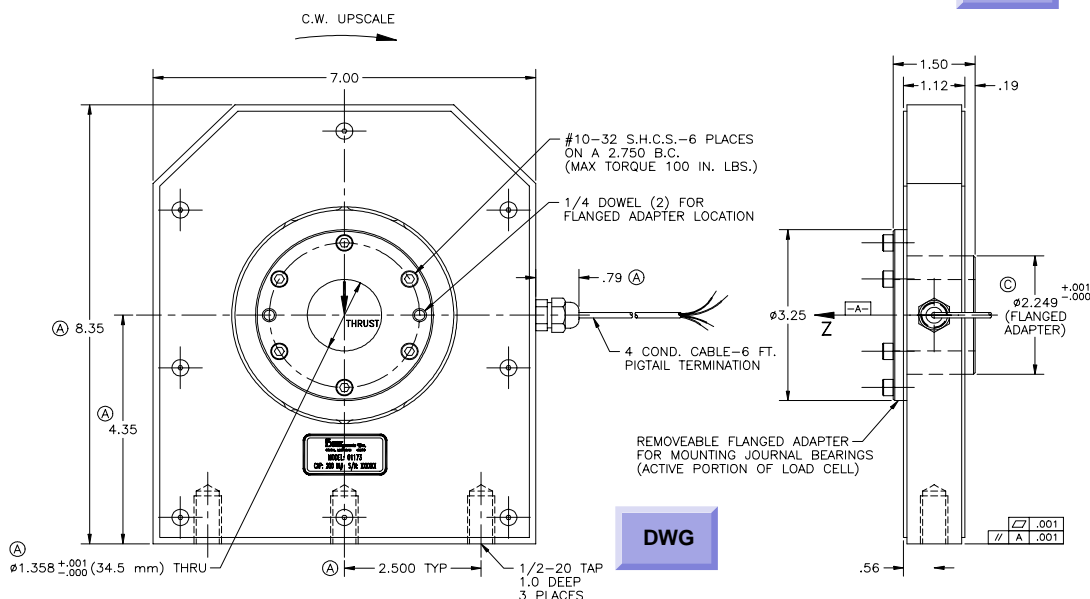
OPTIONAL FEATURES

- Flanged adapters for mounting various bearing diameters
- Tandem configurations for large bearing designs



REMOVEABLE ADAPTER ASS'Y - FOR MODEL: 01274-012-C00A0

DWG



DWG

Standard configuration torque sensor



ORDER TOLL FREE 1-888-SENSOR-1