



Standard Model Nos.

Bushingmount type:

20HHP-5S (5-turn)
20HHP-10S (10-turn)

Servomount type:

20HHP-5S (5-turn)
20HHP-10S (10-turn)

General Specifications

Standard Resistance

Values: 1k,2k,5k,10k,20k,50k (Ω) (5-turn)
2k,5k,10k,20k,50k,100k (Ω)(10-turn)

Total Resistance

Tolerance: Standard Class $\pm 10\%$ (K)
Precision Class $\pm 5\%$ (J)

Independent Linearity

Tolerance: 5-turn 10-turn
Standard Class $\pm 0.35\%$ $\pm 0.25\%$
Precision Class $\pm 0.2\%$ $\pm 0.1\%$

Resolution:

Essentially infinite

Output Smoothness:

Below 0.05% against input voltage
(5-turn)
Below 0.015% against input voltage
(10-turn)

Contact Resistance

Variation: Below 5% C.R.V. (5-turn)
Below 3% C.R.V. (10-turn)

Power Rating:

1.0W (5-turn)
2.0W (10-turn)

Electrical Travel:

$360^\circ \times n \pm 5^\circ$ (n: No. of turns)

Mechanical Travel:

$360^\circ \times n + 10^\circ_0$ (n: No. of turns)

Insulation Resistance:

Over 100M Ω at 1,000V.D.C.

Dielectric Strength:

1 minute at 1,000V.A.C.

Starting Torque:

Below 5mN \cdot m (50gf \cdot cm)
(Bushingmount type)
Below 3mN \cdot m (30gf \cdot cm)
(Servomount type)

Stopper Strength:

Approx. 0.9N \cdot m (9kgf \cdot cm)
(Bushingmount type)
Approx. 0.6N \cdot m (6kgf \cdot cm)
(Servomount type)

Max. Working Voltage:

500V

Resistance Temperature

Coefficient:

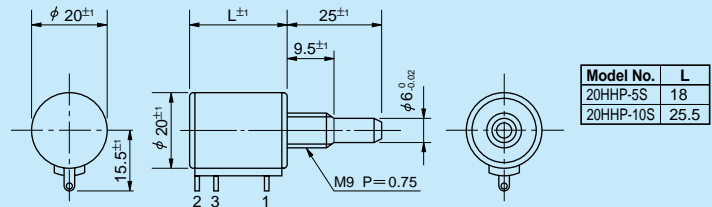
± 100 p.p.m./ $^\circ$ C

Mass:

Approx. 20g (5-turn)
Approx. 25g (10-turn)

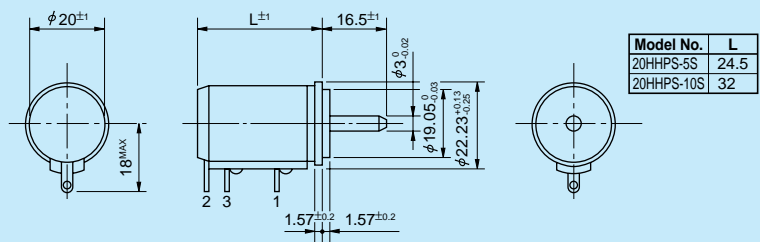
Standard Dimensions

Bushingmount type



Note: 1 pc. inner teeth washer and 2 pcs. hex nuts are attached.

Servomount type



Special Specifications Available

Extra taps (Available up to 1 tap), Multi-ganged (Available up to 2 gangs), Shaft with front and rear extension (Rear shaft with 2mm dia. and 10mm length), Shaft dia. ($\varnothing 6.35$ mm for 20HHP, $\varnothing 3.175$ mm for 20HHP-5S)•bushing with inch dimensions, Special machining on the shaft, With slipping-clutch, With a limit-switch adaptor, Simple sealed housing (except servomount type).

Specially Ordered Models

Special functions of high accuracy are available for multiturn hybrid potentiometers of models 12HHP and 20HHP series as illustrated on the right hand side and are suitable for load correction circuit or temperature compensation circuit.

