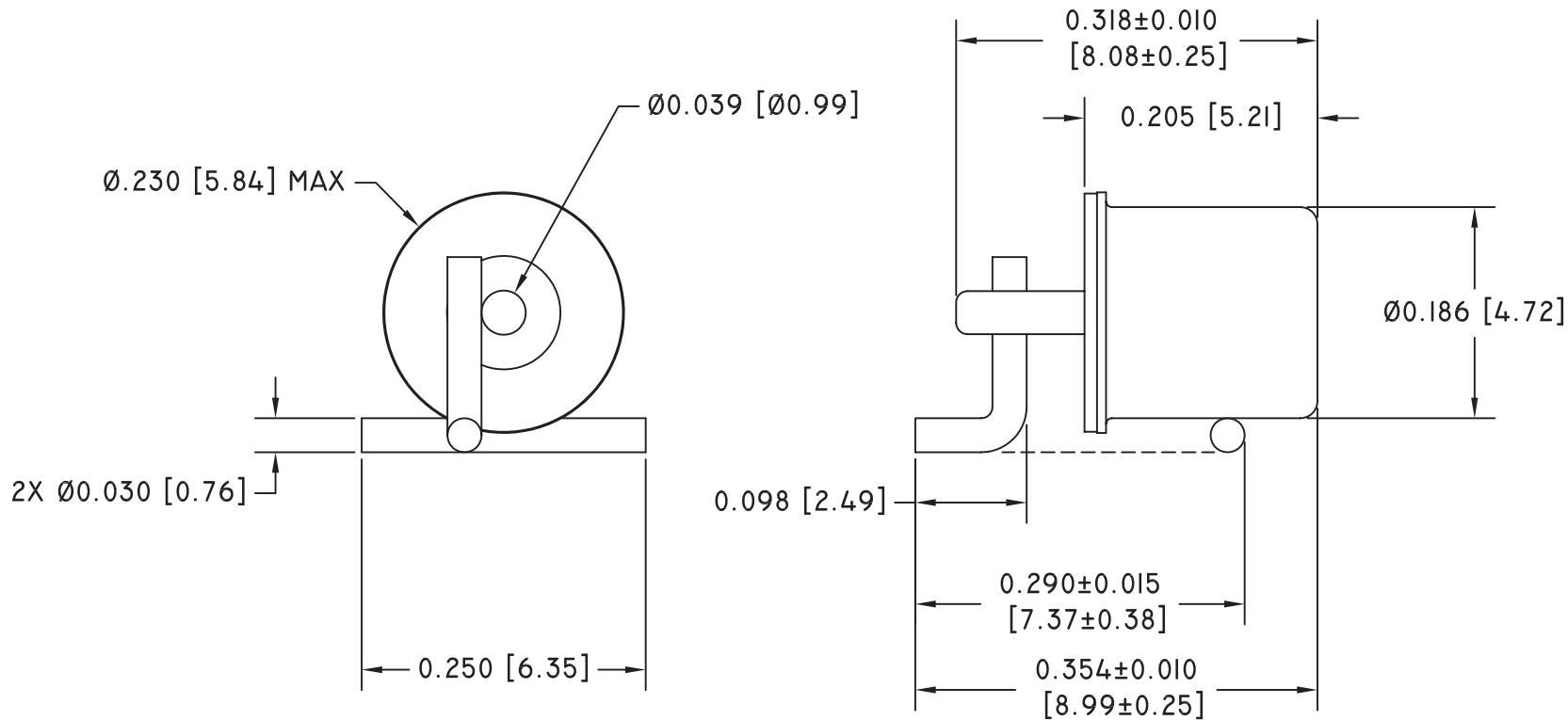


REV.	DATE	REVISION DESCRIPTION	DR.
A	11/07/05	ECN 2005-102	L.L.

ROHS COMPLIANT

NOTES:

1. ELECTRICAL:
 - 1.1 CONTACT CAPACITY 24 VOLTS MAX., 0.20 AMPS MAX., 5 VA MAX.
 - 1.2 CONTACT RESISTANCE 75 OHMS MAX. AT 5 VOLTS DC
2. OPERATE:
 - 2.1 SWITCH MAY BE CLOSED OR OPEN IN ANY STATIONARY POSITION
 - 2.2 SWITCH WILL EXHIBIT CHANGE OF STATE UPON MOVEMENT IN ANY POSITION
 - 2.3 OPERATING TEMPERATURE -37° C TO 100° C
3. FINISH:
 - 3.1 TIN PLATED



COMUS INTERNATIONAL

454 ALLWOOD ROAD, CLIFTON, NEW JERSEY 07012

TEL. (973) 777-6900

ENGINEERING		
QUALITY		
PRODUCTION		
SALES		
APPROVAL	SIGNATURE	DATE

UNSPECIFIED TOLERANCES
 DECIMAL: .XX ±.01 [.25]
 .XXX ±.005 [.13]
 FRACTIONAL: ± 1/64 [.40]
 ANGULAR: ± 1/2°

REF.:	SCALE: NONE	DRAWN BY: L.L.	DATE 11/07/2005
TITLE: MOVEMENT/VIBRATION SENSOR; SURFACE MOUNT			
		DRAWING #: AG2402-6	