

ACCU-SET Series Digital Closed Loop Control System for use with conventional AC Frequency or DC Drives

A compact, economical control unit that is used with conventional AC frequency and DC drives, any horsepower, to provide LED display of set speeds and precise, digital closed loop motor speed control. Set speeds are displayed directly in RPM, FPM, GPM, Process Time, or other engineering units.

An on-board microprocessor with non-volatile memory coupled with sophisticated internal software makes Dart's Accu-Set the ultimate in accuracy and control.

Friendly field programming permits customizing the Accu-Set to the exact specifications for particular applications; maximum and minimum set speed, decimal points or colon, operating mode (master or follower), and the constant which takes into account motor gear ratios.

The Accu-Set is simple to operate - just set the desired RPM, rate, or time in the large 1/2" LED display by depressing the "up-down" pushbuttons, one digit at a time or fast sweep.

The Accu-Set settings are exact and repeatable. It will precisely control speed to a remarkable $\pm 1/2$ RPM of set speed, long term.

The panel mount unit is easy to install in the industry standard cut-out dimension of 1/8 DIN. All wiring connects directly to a screw type barrier terminal strip.

Dart's Accu-Set is ideally suited for many applications, such as: blending, mixing, grinding, pumping, conveyors, and other processes; **particularly for continuous flow type systems.**

ACCUSET SERIES STANDARD FEATURES

- Replaces conventional 3-wire analog speedpot for most AC frequencies and DC drives, any horsepower, for precise, repetitive set points
- Microprocessor based, field programmable operating parameters allow set speed to be directly displayed in RPM, FPM, GPM, Process Time, or other units
- Compact 1/8DIN sturdy aluminum housing for panel mount
- Large four digit 1/2" LED display for set speed
- Up and Down pushbutton switches for set points-slow/fast sweep
- G.E. "Lexan" membrane covering red lens
- Screw type barrier terminal strip
- Self-contained power supply for transducer(+5 VDC, 50mA output)
- Non-volatile memory retains last set point upon loss of AC power
- Digital closed loop
- Programmable operating parameters:
 - Maximum set speed
 - Minimum set speed
 - Decimal point or colon
 - Constant for gear ratios
- Inhibit circuit permits remote start/stop without breaking AC lines and pre-setting speed
- Master/Follower operation
- Uses a variety of Pick-up inputs; Dart PU-E, Hall-Effect, Photoelectric, Magnetic (optional), or any TTL

ASP10 SELECTION GUIDE

MODEL	INPUT	DISPLAY UNITS	STD. SPEED RANGE
ASP10	120 VAC	Rate or Time	Field Programmable*
ASP10-5	240 VAC	Rate or Time	Field Programmable*

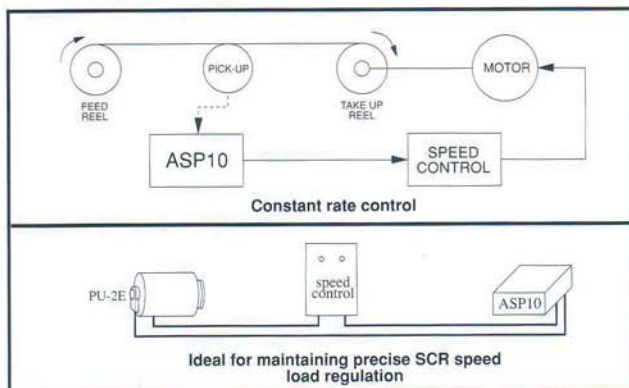
Requires Dart PU-E or other pick-up.

* Shipped set for 0 - 2400 RPM with one pulse per revolution

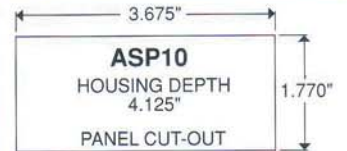
OPERATING SPECIFICATIONS

Temperature -10° to +45° C.
 AC Input Voltage ±10% Rated Line Voltage
 Input Frequency 50/60 Hz.
 Maximum input pulse rate 5,000 pulses per minute
 Resolution from 0.01 RPM
 Speed range same as driven unit
 Accuracy ± 1/2 RPM of set speed (time), long term
 Supply voltage applied across output +5 thru 15 VDC
 Input impedance Accu-set output will drive 100Ω-100KΩ
 Transducer Signal Input 0-5 to 0-24 VDC square wave

ACCU-SET CONFIGURATIONS



DIMENSIONAL SPECIFICATIONS

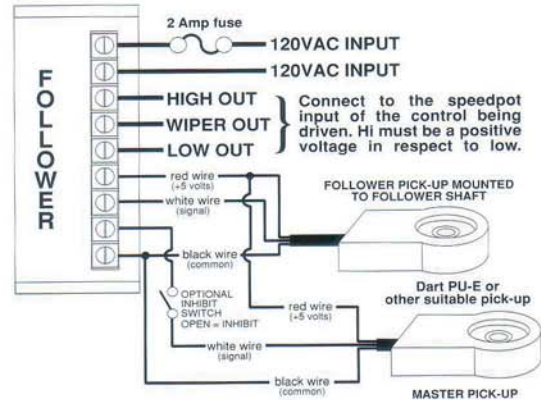
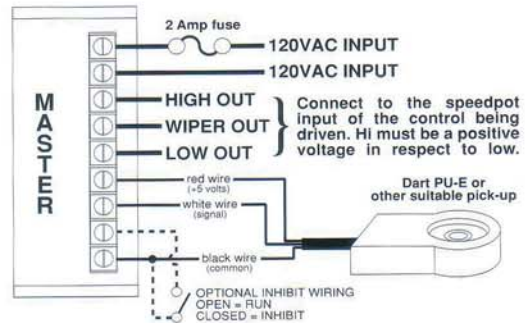


MODEL	WIDTH	HEIGHT	DEPTH
<i>English (inches)</i>			
Housing	3.62	1.66	4.13
Lens	4.42	2.25	0.25
<i>Metric (centimeters)</i>			
Housing	9.19	4.22	10.48
Lens	11.27	5.71*	00.64

OPTION DESCRIPTION

OPTION Provisions for remote Up/Down pushbutton switches ... -1
 Divide by 100 option board for magnetic pick-up -3*
Other options are available, please consult factory for your requirement.
 * Field installable.

ACCU-SET HOOK-UP



ACCU-SET CONFIGURATIONS

