

REV.	DATE	REVISION RECORD	DR.

NOTES:

1. ELECTRICAL:

1.1. CONTACT CAPACITY 60 VAC MAX., 0.1 A, 3 VA MAX..

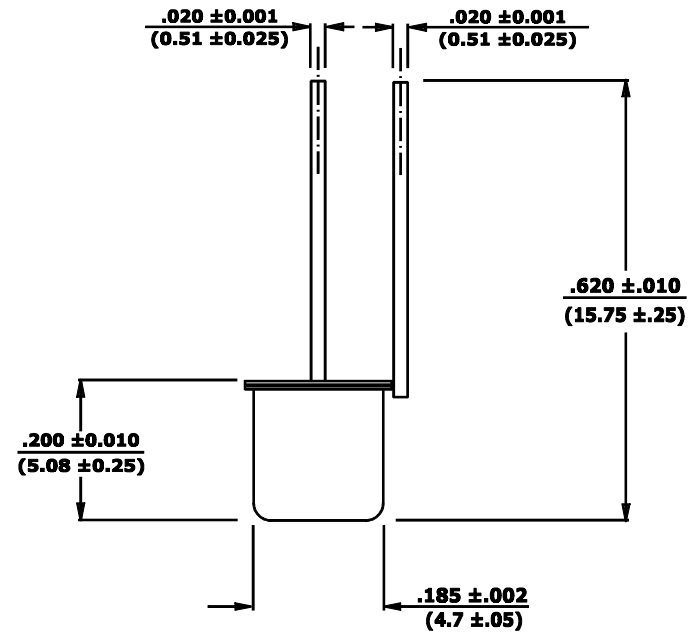
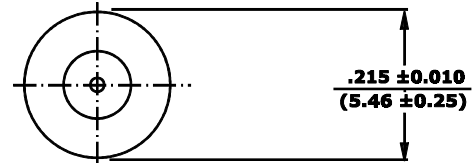
2. OPERATE:

2.1. WHEN STATIONARY IN ANY POSITION

**THE SWITCH CONTACTS WILL ALWAYS REMAIN OPEN
AND UPON VIBRATION OR MOVEMENT THE CONTACTS
WILL INTERMITTENTLY CLOSE.**

3. FINISH:

3.1. EXTERNALLY TIN PLATED.



COMUS INTERNATIONAL
454 ALLWOOD RD. CLIFTON, NJ 07012 U.S.A. PH (973) 777-6900

TOLERANCES (except as noted) DECIMAL $\pm .01$ (.254) 2 Digit $\pm .005$ (.127) 3 Digit FRACTIONAL $\pm 1/64$ (.397) ANGULAR $\pm 1/2^\circ$	REF.:	SCALE: NONE	DRAWN BY: L.L.	APPROVED:
	DATE:			
TITLE: MINIATURE NORMALLY OPEN VIBRATION SENSOR				
DATE: 05/06/2000		DRAWING NUMBER: CM1344-1		