



DP4 Series Digital Speed Potentiometer with Display

A microprocessor based digital speed potentiometer with LED display of set speed to directly replace the conventional 3-wire analog speedpot for most AC and DC drives.

The desired set speed is entered into the large 1/2" LED display by depressing the "up" and "down" pushbuttons; one digit at a time or fast sweep. The standard model settings are in 0.1% increments of full motor speed.

The attractive panel mount unit is easy to install in industry standard 1/8 DIN cut-out dimensions. The electrically isolated common signal permits direct wiring from the unit terminal block to the drive's potentiometer terminal points.

The DP4 Series is ideal for new equipment as well as for retrofitting existing drives.

Temperature	-10° to +45° C.
AC Input Voltage	±10% Rated Line Voltage
Input Frequency	50/60 Hz.
Supply voltage applied across output	5 VDC to 15 VDC
Speed Regulation.....	same as driven unit
Digital Accuracy	±0%*
Input impedance the DP4 output will drive ...	00Ω–100K Ω
Output	Isolated 3-wire pseudo-pot (normal or inverted output)
Display settings	0-100% of speed range in 0.1% increments (resolution of 1000)

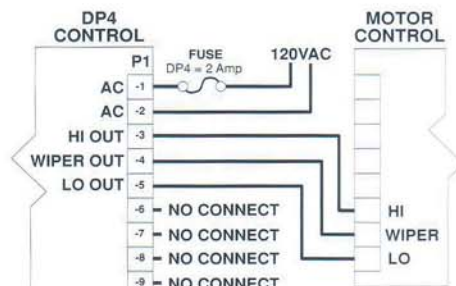
* NOTE: For closed loop system, refer to Accu-Set series

DIMENSIONAL SPECIFICATIONS



MODEL	WIDTH	HEIGHT	DEPTH
<i>English (inches)</i>			
Housing	3.62	1.66	4.13
Lens	4.42	2.25	0.25
<i>Metric (centimeters)</i>			
Housing	9.19	4.22	10.48
Lens	11.27	5.71	00.64

DP4 HOOK-UP DIAGRAM



NOTE:
COMPATIBLE WITH MOST DRIVES HAVING SUPPLY VOLTAGE OF 5 - 15VDC, AND INPUT IMPEDENCE OF 100 OHMS TO 100,000 OHMS.

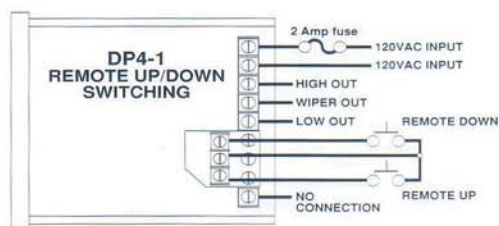
DP 4 SERIES STANDARD FEATURES

- Microprocessor based
- Compact 1/8DIN sturdy aluminum housing for panel mount
- Large four digit 1/2" LED display for set speed
- Up and Down pushbutton switches for set points—slow/fast sweep
- G.E. "Lexan" membrane covering red lens
- Screw type barrier terminal strip
- Self-contained power supply
- Output voltage level directly proportional to display setting
- Replaces conventional 3-wire analog speedpot for most AC frequency and DC drives for precise, repetitive set points
- DP4 can be used on most drives that normally operate with a 3-wire analog pot, and have a supply voltage of 5 to VDC and an input impedance of 100 Ω to 100K Ω
- Non-volatile memory retains last set point upon loss of AC power (user selectable via dip switch settings)

OPTION DESCRIPTION

OPTION	SUFFIX
Provisions for remote Up/Down pushbutton switches	-1

-1 OPTION HOOK-UP



DP4 SELECTION GUIDE

MODEL	INPUT	STD. SPEED RANGE
DP4	120 VAC 50/60 Hz.	0-100% (0.1% INCREMENTS)
DP4-5	240 VAC 50/60 Hz.	0-100% (0.1% INCREMENTS)