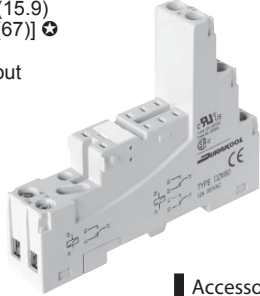


Plug-in sockets and accessories

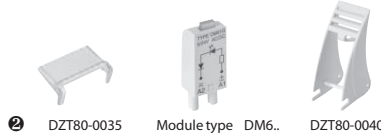
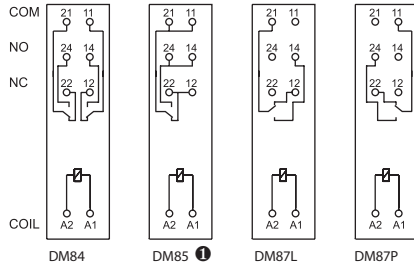
DZM80

For DM84, DM85, DM87L, DM87P

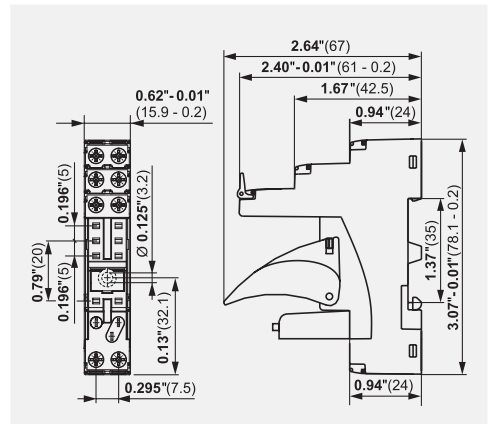
Screw terminals
1.37 in (35 mm) DIN
snap on rail mounting,
or direct panel mounting
3.07 in (78.1) x 0.63 (15.9)
x 2.4 in (61) [2.64 in (67)]
Double pole
0.2 in (5 mm) pin layout
12 A, 300 V



Connection diagrams



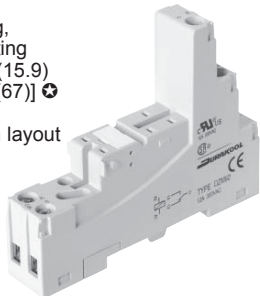
Dimensions



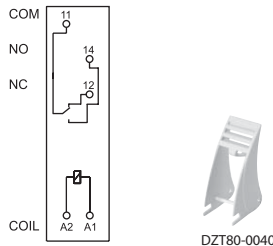
DZM92

For DM87N, DM87N sensitive

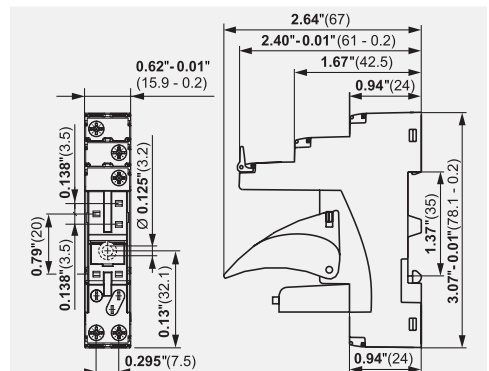
Screw terminals
1.37 in (35 mm) DIN
snap on rail mounting,
or direct panel mounting
3.07 in (78.1) x 0.63 (15.9)
x 2.4 in (61) [2.64 in (67)]
Single pole
0.138 in (3.5 mm) pin layout
12 A, 300 V



Connection diagram



Dimensions



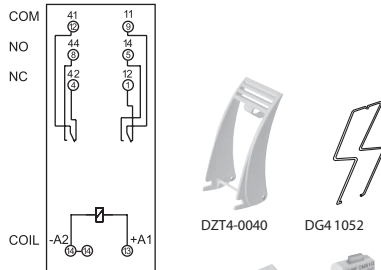
DZM2

For D2

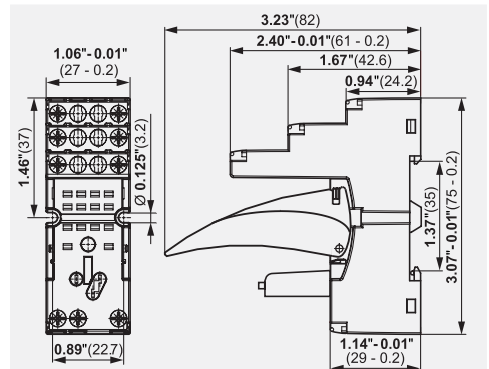
Screw terminals
1.37 in (35 mm) DIN
snap on rail mounting,
or direct panel mounting
2.95 in (75) x 1.06 (27)
x 2.4 in (61) [3.23 in (82)]
Double pole
12 A, 300 V



Connection diagram



Dimensions



- ① For DM85: loads up to 12 A do not require bridging of common terminals. Loads above 12 A require bridging pairs of terminals: 11 with 21, 12 with 22, 14 with 24 [clamp bridge Cu wire minimum 14 AWG (1.5 mm²)].
- ② Signalling / protection modules type DM6...



For plug-in sockets type:
DZM80, DZM92, DZM2, DZM4

≡ A2 → DM61G : 6/24 V AC/DC
± A1 → DM62G : 24/60 V AC/DC
DM63G : 110/230 V AC/DC

LED green color.
AC/DC voltage allowed.
Coil energized indicator.

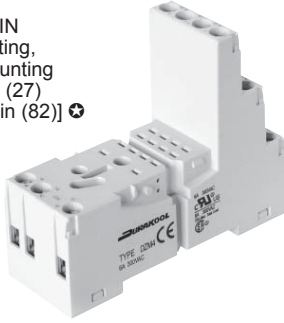
- ③ DUC11 limits max switching voltage up to 250 V AC/DC and coil rated voltage up to 240 V AC.
- ④ The height of sockets with retainer / retractor clip is shown in square brackets.

Plug-in sockets and accessories

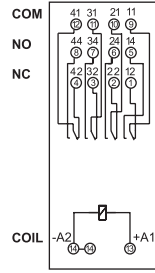
DZM4

For D4

Screw terminals
1.37 in (35 mm) DIN
snap on rail mounting,
or direct panel mounting
2.95 in (75) x 1.06 (27)
x 2.4 in (61) [3.23 in (82)]
Four pole
6 A, 300 V

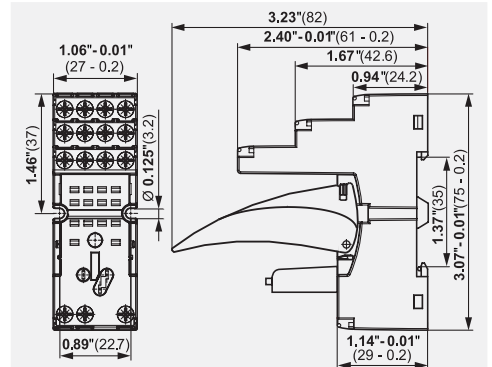


Connection diagram



Accessories DZT4-0035 Module type DM6.

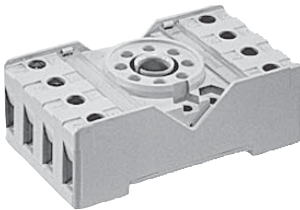
Dimensions



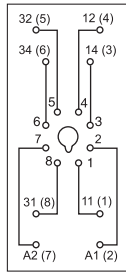
DZ8

For D15 DPDT

Screw terminals
1.37 in (35 mm) DIN
snap on rail mounting,
or direct panel mounting
2.68 in (68.2) x 1.5 (38)
x 0.94 in (24.2)
10 A, 250 V

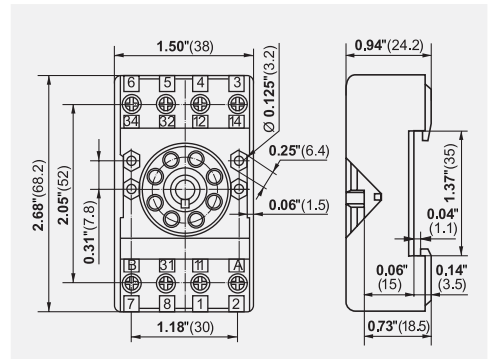


Connection diagram



Accessories DZ11 0031

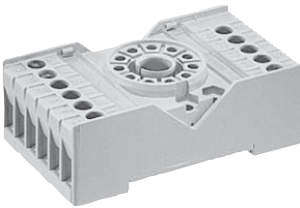
Dimensions



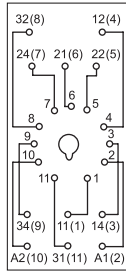
DZ11

For D15 3PDT

Screw terminals
1.37 in (35 mm) DIN
snap on rail mounting,
or direct panel mounting
2.68 in (68.2) x 1.5 (38)
x 0.94 in (24.2)
10 A, 250 V

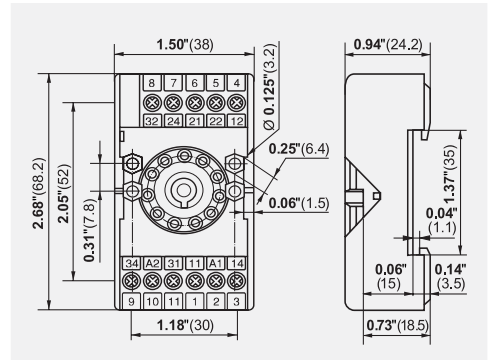


Connection diagram



Accessories DZ11 0031

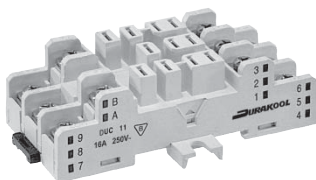
Dimensions



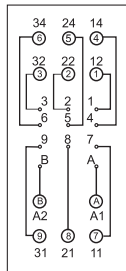
DUC11

For DUC

Screw terminals
1.37 in (35 mm) DIN
snap on rail mounting,
or direct panel mounting
3.23 in (82) x 1.66 (42.2)
x 1.04 in (26.5)
16 A, 250 V



Connection diagram



Accessories DMBA

Dimensions

