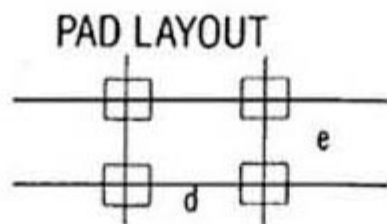
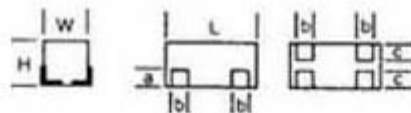


LVS2 2W @ 25°C. Wire Wound Current Sensing SMD 4-tab Shur



Electrical & Physical Specifications:

H-Height	6.35mm (.250")
L-Length	9.78mm (.385")
W-Width	5.72mm (.225")
Tab Dimensions:	a=.125"; b=.112"; c=.100"; d=.193"; e=.150"
Minimum Resistance @ Max Power:	.03Ω; @ 2W
Minimum Resistance @ Derated Power:	.001Ω; @ .064W

LVS Series Engineering Attributes:

RESISTANCE & TOLERANCES

Select any Ohmic value (Ω) or decimal part of an Ohm from .001 Ω to 100K Ω with micro-ohm/micro-volt accuracies to $\pm 0.005\%$. See Figure #2 shown below for the minimum resistance vs. tolerance requirements. PRC's unique single-joint design on the four (4) terminal parts make tab identification academic.

TCR CHARACTERISTICS

0 ± 15 PPM/ $^{\circ}$ C is the standard for this part type. Add LTC in the part name for a lower TCR of 0 ± 10 PPM/ $^{\circ}$ C. This Low Temperature Coefficient (LTC) is only sustainable if the combined temperature of self-heating and ambient (surrounding environment) operating temperature does not exceed +150 $^{\circ}$ C. Please specify temp. span of operation.

STABILITY VS. TIME

To $\pm 0.001\%/yr.$ @ 25 $^{\circ}$ C. with no load.

PRECISION POWER

Min. Res. @ Max Watts is based upon $\pm 1\%$ resistance tolerances @ +25 $^{\circ}$ C. Derating is required for higher temperatures, closer tolerances & lower resistance values. See Figure #3 shown below for derating requirements.

PROTECTIVE SEAL

Rectangular solvent-resistant epoxy case is solder heat resistant & offers excellent thermal transfer to base.

TERMINALS

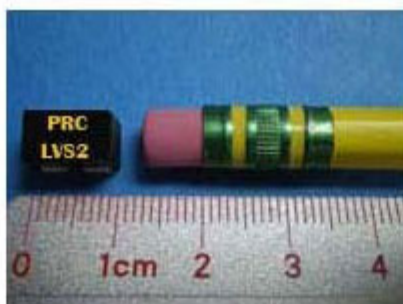
Solderable hot-tinned pure copper (ETP/OFHC) tab terminals & low EMF construction reduces thermal effects usually associated with low value resistors.

MARKING (Identification)

PRC stamp, part type & name, Ω value & tolerance, physical size permitting.

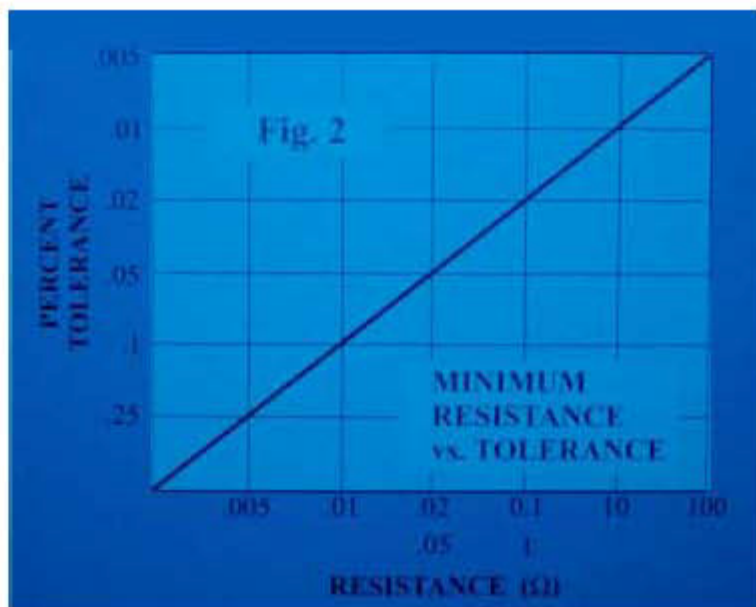
TAPE & REEL

Have your parts delivered to you in tape & reel form by simply specifying Tape & Reel instead of bulk when placing your order. For detailed information on all the individual specifications for the tape &

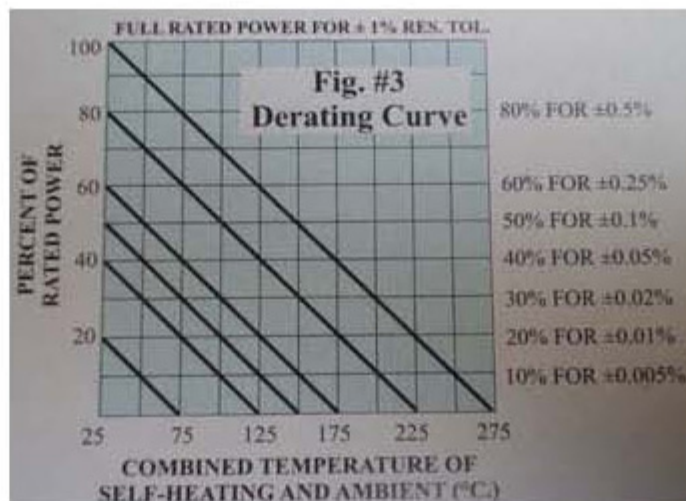


reel delivery option, click the [Tape & Reel Chart](#)

Detailed Images



Minimum Resistance vs. Tolerance



Derating Information

Details

SKU	LVS2
Type	SMD 4-tab
Length	9.78mm (.385")
Width	5.72mm (.225")
Tab Dimensions	a=.125"; b=.112"; c=.100"; d=.193"; e=.150"
Height	6.35mm (.250")
TCR Char.	0±15ppm/°C. (std.)... to 0±10ppm/°C.
Temperature	-65°C to +275°C (@ 1%).
Resistance	.001Ω - 100Ω
Tolerance	to ±.005%
Max Amps	8
Stability	to ±.005% per year @ 25°C
Max Watts	2
Max Volts	-
Lead Free	Yes