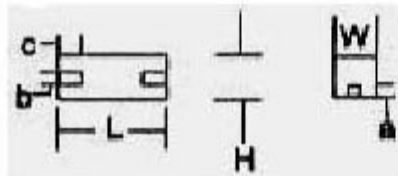
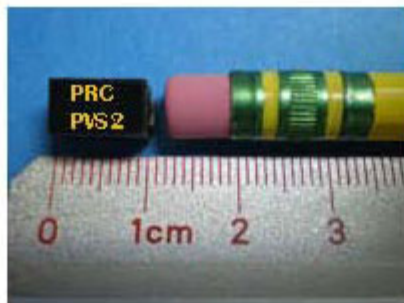
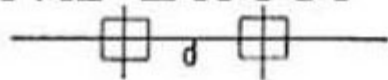


## PVS2 2W Wire Wound Current Sensing Shunts 2-Tab Surface Mounted Design (SMD)



### PAD LAYOUT



### Electrical & Physical Specifications:

<b>H-Height</b>	6.35mm (.250")
<b>L-Length</b>	9.78mm (.385")
<b>W-Width</b>	5.72mm (.225")
<b>Tab Dimensions:</b>	a=.125"; b=.112"; c=.100"; d=.310"
<b>Minimum Resistance @ Maximum Wattage:</b>	.03Ω @ 2W
<b>Minimum Resistance @ the Derated Wattage:</b>	.001Ω @ .064W

### PVS Series Engineering Attributes:

#### RESISTANCE & TOLERANCES

Select any Ohmic value ( $\Omega$ ) or decimal part of an Ohm from .001 $\Omega$  to 100K $\Omega$  with micro-ohm/micro-volt accuracies to  $\pm 0.005\%$ . See Figure #2 shown below for the minimum resistance vs. tolerance requirements. PRC's unique single-joint design on the four (4) terminal parts make tab identification academic.

#### TCR CHARACTERISTICS

$0 \pm 15$  PPM/ $^{\circ}\text{C}$  is the standard for this part type. Add LTC in the part name for a lower TCR of  $0 \pm 10$  PPM/ $^{\circ}\text{C}$ . This Low Temperature Coefficient (LTC) is only sustainable if the combined temperature of self-heating and ambient (surrounding environment) operating temperature does not exceed  $+150^{\circ}\text{C}$ . Please specify temp. span of operation.

#### STABILITY VS. TIME

To  $\pm 0.001\%/yr.$  @  $25^{\circ}\text{C}$ . with no load.

#### PRECISION POWER

Min. Res. @ Max Watts is based upon  $\pm 1\%$  resistance tolerances @  $+25^{\circ}\text{C}$ . Derating is required for higher temperatures, closer tolerances & lower resistance values. See Figure #3 shown below for derating requirements.

#### PROTECTIVE SEAL

Rectangular solvent-resistant epoxy case is solder heat resistant & offers excellent thermal transfer to base.

#### TERMINALS

Solderable hot-tinned pure copper (ETP/OFHC) tab terminals & low EMF construction reduces thermal effects usually associated with low value resistors.

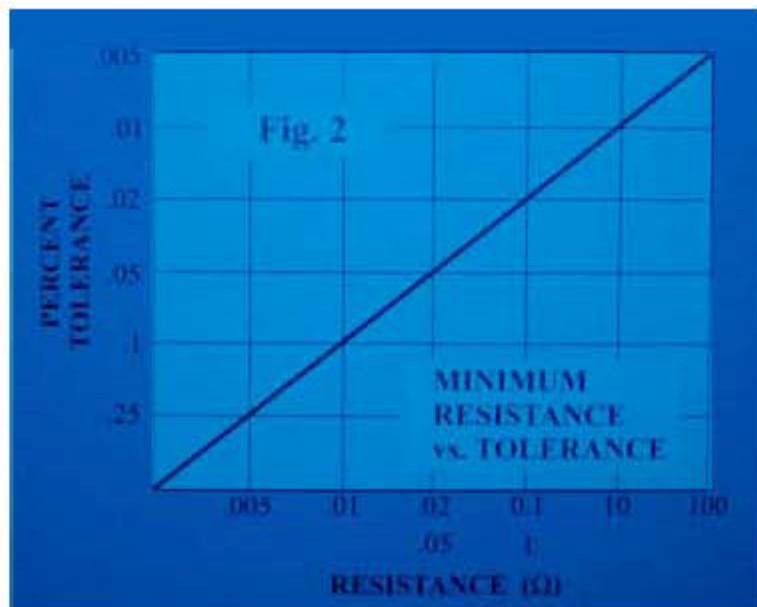
#### MARKING (Identification)

PRC stamp, part type & name,  $\Omega$  value & tolerance, physical size permitting.

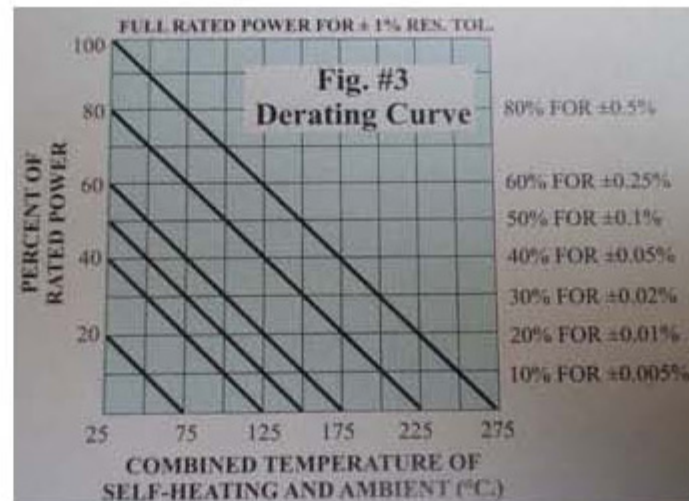
#### TAPE & REEL

Have your parts delivered to you in tape & reel form by simply specifying Tape & Reel instead of bulk when placing your order. For detailed information on all the individual specifications for the tape & reel delivery option, click the [Tape & Reel Chart](#)

## Detailed Images



Minimum Resistance vs. Tolerance Chart



Derating Chart

### Details

SKU	PVS2
Type	SMD 2-tab
Length	9.78mm (.385")
Width	5.72mm (.225")
Tab Dimensions	a=.125"; b=.112"; c=.100"; d=.310"
Height	6.35mm (.250")
TCR Char.	0±15ppm/°C. (std.)... to 0±10ppm/°C.
Temperature	-65°C to +275°C (@ 1%).
Resistance	.001Ω - 15kΩ
Tolerance	to ±.005%
Max Amps	8
Stability	to ±.005% per year @ 25°C
Max Watts	2
Max Volts	-
Lead Free	Yes