

## Encoder WDG 115T



- “Digital Tachogenerator” with robust Standard-flange
  - High noise immunity against frequency inverters
  - Protection to IP67, shaft sealed to IP65
  - 10 mm shaft
  - With control output
  - Optional: -40°C ... +80°C
- [www.wachendorff.de/wdg115T-engl](http://www.wachendorff.de/wdg115T-engl)

### Application field

Electric motors, elevator construction, conveyer and drive systems.

**Available PPR** up to 5000

### Mechanical Data

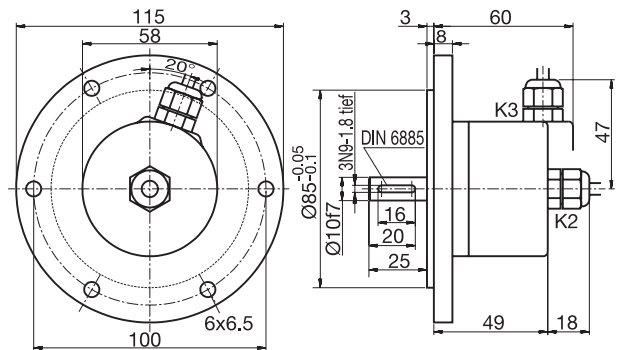
- Housing**
- Tachoflange: Aluminium
  - Housing: Aluminium, powder coated
- Shaft**
- Material: stainless steel
  - Load on shaft end: max. 200 N radial  
max. 120 N axial
  - Starting torque: approx. 1 Ncm at ambient temperature
- Bearings**
- Type: 2 precision ball bearings
  - Service life: 10<sup>9</sup> revs. at 100% of full rated shaft load  
10<sup>10</sup> revs. at 40%  
10<sup>11</sup> revs. at 20%
- Operating speed:** 8.000 rpm
- Weight:** approx. 520 g
- Connections:** Shielded cable or connector
- Protection rating:** IP67, shaft sealed to IP65 (EN 60529)
- Operating temperature:** -20... +80°C, 1Vss: -10... +70°C
- Storage temperature:** -30... +80°C

### Electrical Data

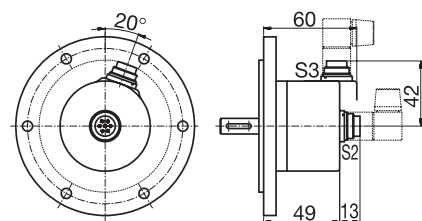
Power supply	Output circuit	Key	Output circuit*	Key
10-30 VDC	HTL	G24	HTL, inv.	I24
5 VDC	TTL	G05	RS422, TTL comp.	I05
5-30 VDC	HTL	H30	HTL, inv.	R30
10-30 VDC	-	-	RS422, TTL comp.	245
5 VDC	-	-	1 Vss Sin./Cos.	SIN

\*Only for cable or connector:  
K2, L2, K3, L3, S4, S5, SB8, SC8, SB12, SC12

### Cable connection K2, K3



### Connector S2, S3, 7-pin



### Connector S4, S5, 12-pin

