

Encoder WDG 40A



- Robust and economical encoder with small dimensions
 - Servo flange
 - With control output
 - Protection to IP67, shaft sealed to IP65
- www.wachendorff.de/wdg40a-engl

Application field

Food processing and packaging machines, wood processing machines, testing machines and cleaning installations.

Available PPR up to 2500

Mechanical Data

Housing

- Servo flange: Aluminium
- Housing: Aluminium, powder coated
- Cam mounting: pitch \varnothing 51 mm

Shaft

- Material: stainless steel
- Load on shaft end: max. 80 N radial
max. 50 N axial
- Torque: approx. 0,2 Ncm at ambient temperature

Bearings

- Type: 2 precision ball bearings
- Service life: 10 U⁹ revs. at 100% of full rated shaft load
10 U¹⁰ revs. at 40%
10 U¹¹ revs. at 20%

Operating speed: 12.000 rpm

Weight: approx. 100 g

Connections: Shielded cable or connector

Protection rating IP67, shaft sealed to IP65
(EN 60529):

Operating temperature: -20... +80 °C

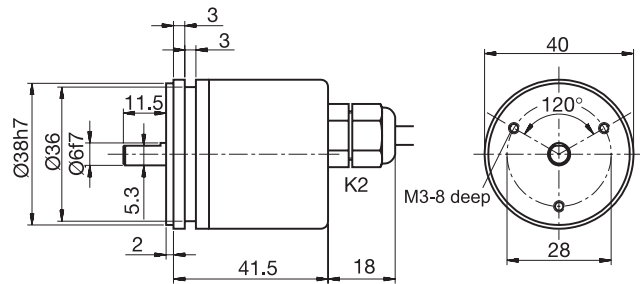
Storage temperature: -30... +80 °C

Electrical Data

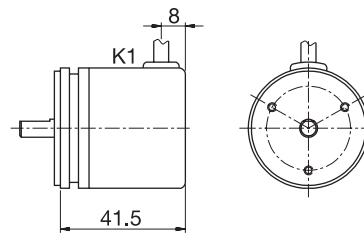
Power supply	Output circuit	Key	Output circuit*	Key
10-30 VDC	HTL	G24	HTL, inv.	I24
5 VDC	TTL	G05	RS422, TTL comp.	I05

*Only for cable or connector: K2, L2, SB8, SB12

Cable connection K2



Cable connection K1



Connector S2, 7-pin

