

Encoder WDG 50B



- Economic encoder with mechanical carrying of loading capacity
 - Clamping flange
 - With control output
 - Protection to IP67, shaft sealed to IP65
- www.wachendorff.de/wdg50b-engl

Application field

Machines used in the wood and plastic industries, food processing machines, motion Control, machines for shoe manufacture and the leather industry.

Available PPR up to 2500

Mechanical Data

Housing

- Clamping flange: Aluminium
- Housing: Aluminium, powder coated
- Cam mounting: pitch \varnothing 61 mm

Shaft

- Material: stainless steel
- Load on shaft end: max. 120 N radial
max. 70 N axial
- Starting torque: approx. 0,3 Ncm at ambient temperature

Bearings

- Type: 2 precision ball bearings
- Service life: 2 x 10⁸ revs. at 100% of full rated shaft load
3 x 10⁹ revs. at 40%
2 x 10¹⁰ revs. at 20%

Operating speed: 12.000 rpm

Weight: approx. 160 g

Connections: Shielded cable or connector

Protection rating: IP67, shaft sealed to IP65
(EN 60529)

Operating temperature: -20... +80°C

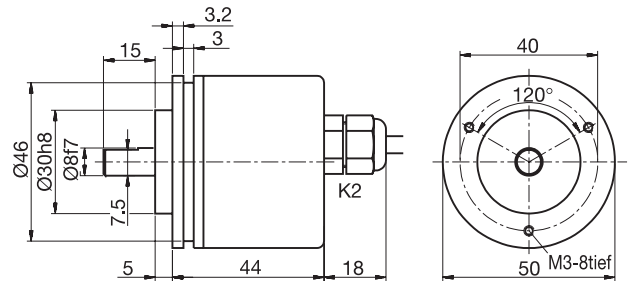
Storage temperature: -30... +80°C

Electrical Data

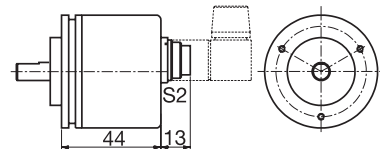
Power supply	Output circuit	Key	Output circuit*	Key
10-30 VDC	HTL	G24	HTL, inv.	I24
5 VDC	TTL	G05	RS422, TTL comp.	I05

*Only for cable or connector: K2, L2, SB8, SB12

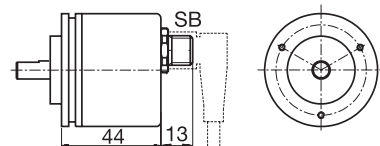
Cable connection K2



Connector S2, 7-pin



Sensor-connector (M12x1) SB, 4-, 5-, 8-, 12-pin



Options:
Low-friction bearings:

The encoder WDG 50B is also available as a particularly smooth-running low-friction encoder. The starting torque is thereby changed to $\leq 0,25$ Ncm and the protection class at the shaft input to IP50. When ordering please add the suffix code - AAC.

Cable length:

The encoder WDG 50B can be supplied with more than 2 m cable. Please extend the standard order code with a three figure number, specifying the cable length in decimetres.

All dimensional specifications in mm.

Further technical information on www.wachendorff.de/gtd
 Matching accessories on www.wachendorff.de/acs

Ordering information:

<p>Output circuit: G24 = 10-30 VDC, HTL G05 = 5 VDC, TTL</p> <p>Output circuit inv.: I24 = 10-30 VDC, HTL I05 = 5 VDC, RS422 TTL comp.</p> <p>Inverted only for cable or connector: K2, L2, SB8, SB12</p>	<p>Channels: AB, ABN</p>	<p>Pulses per revolution: 4, 9, 10, 15, 20, 25, 28, 30, 36, 40, 50, 60, 90, 100, 120, 125, 128, 150, 160, 180, 200, 235, 250, 300, 314, 318, 360, 400, 500, 600, 625, 635, 720, 900, 1000, 1024, 1080, 1200, 1250, 1500, 2000, 2048, 2500.</p> <p>Other PPR's on request</p>	<p>Electrical connections:</p> <p>Cable: K2 = axial, 2 m, shield not connected (standard) L2 = axial, 2 m, shield connected to encoder housing</p> <p>Connector: S2 = 7-pin axial SB4 = 4-pin axial SB5 = 5-pin axial SB8 = 8-pin axial SB12 = 12-pin axial</p> <p>Please note the connection configuration under "General technical data", Page 122</p>	<p>Options: Empty = Low-friction bearings = Cable length =</p> <p style="text-align: right;">without option AAC in decimetres</p>		
<p>Order No.:</p>						
Example	WDG 50B	500	ABN	G24	K2	
Your encoder	WDG 50B					