

Encoder WDG 53S



Suitable for use in saltwater

- Extremely rugged and economical encoder with short measurements
 - With control output
 - Easy screw mounting
 - Protection to IP68
- www.wachendorff.de/wdg53s-engl

Application field

Machines for labelling inspection and filling, industrial elevators also for outdoor use, belt scale in a quarry, automatic car wash machines and crane systems.

Available PPR up to 1500

Mechanical Data

- Screw flange: Aluminium incl. nut M20 x 1,5
- Housing: Aluminium anodised (blue)

Shaft

- Material: stainless steel
- Load on shaft end: max. 20 N radial, max. 10 N axial
- Starting torque: approx. 1,2 Ncm at ambient temperature

Bearings

- Type: 2 precision ball bearings
- Service life: 10⁹ revs. at 100% of full rated shaft load, 10¹⁰ revs. at 40%, 10¹¹ revs. at 20%

- Operating speed: 6.000 rpm
- Weight: approx. 215 g
- Connections: Shielded cable or connector
- Starting torque nut: max. 10 Nm

Protection rating: IP68, direct at connector IP67 (EN 60529)

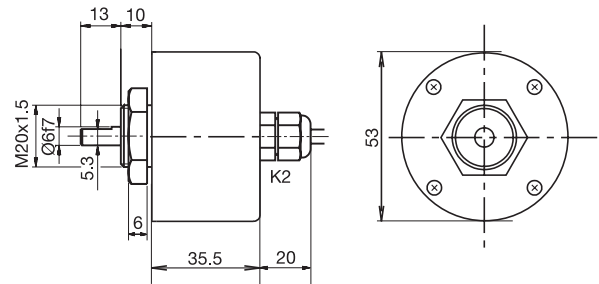
- Operating temperature: -20... +80 °C
- Storage temperature: -30... +80°C

Electrical Data

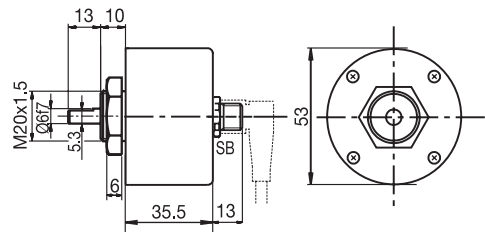
Power supply	Output circuit	Key	Output circuit*	Key
10-30 VDC	HTL	G24	HTL, inv.	I24
5 VDC	TTL	G05	RS422, TTL comp.	I05

*Only for cable or connector: K2, L2, SB8, SB12

Cable connection K2



Sensor-connector (M12x1) SB, 4-, 5-, 8-, 12-pin



Options:
Cable length:

The encoder WDG 53S can be supplied with more than 2 m cable. Please extend the standard order code with a three figure number, specifying the cable length in decimetres.

All dimensional specifications in mm.

Further technical information on www.wachendorff.de/gtd
 Matching accessories on www.wachendorff.de/acs

Ordering information:

<p>Output circuit: G24 = 10-30 VDC, HTL G05 = 5 VDC, TTL</p> <p>Output circuit inv.: I24 = 10-30 VDC, HTL I05 = 5 VDC, RS422 TTL comp.</p> <p>Inverted only for cable or connector: K2, L2, SB8, SB12</p>	<p>Channels: AB, ABN</p>	<p>Pulses per revolution: 4, 9, 10, 15, 20, 25, 28, 30, 40, 50, 60, 90, 100, 120, 125, 128, 150, 160, 180, 200, 235, 250, 300, 314, 318, 360, 400, 500, 600, 625, 635, 720, 900, 1000, 1024, 1080, 1200, 1250, 1500.</p> <p>Other PPR's on request</p>	<p>Electrical connections:</p> <p>Cable: K2 = axial, 2 m, shield not connected (standard) L2 = axial, 2 m, shield connected to encoder housing</p> <p>Connector: SB4 = 4-pin axial SB5 = 5-pin axial SB8 = 8-pin axial SB12 = 12-pin axial</p> <p>Please note the connection configuration under "General technical data", Page 122</p>	<p>Options: Empty = without option Cable length = in decimetres</p>		
<p>Order No.:</p>						
Example	WDG 53S	500	ABN	G24	K2	
Your encoder	WDG 53S					