

Encoder WDG 53V



**Suitable for use within
the food industry**

- Extremely rugged and economical encoder with short measurements
- Easy screw mounting
- Protection to IP68
www.wachendorff.de/wdg53v-engl

Application field

Machines for labelling inspection and filling, industrial elevators also for outdoor use, belt scale in a quarry, automatic car wash machines and crane systems.

Available PPR up to 1500

Mechanical Data

- Screw flange: stainless steel V4A, incl. nut M20 x 1,5
- Housing: stainless steel V4A, permissible for use with food stuff, grommet, stainless steel V2A

Shaft

- Material: stainless steel V4A
- Load on shaft end: max. 30 N radial
max. 45 N axial
- Starting torque: approx. 1,2 Ncm at ambient temperature

Bearings

- Type: 2 precision ball bearings
- Service life: 10⁹ revs. at 100% of full rated shaft load
10¹⁰ revs. at 40%
10¹¹ revs. at 20%

Operating speed: 6.000 rpm
 Weight: approx. 470 g
 Connections: cable
 Starting torque Nut: max. 10 Nm

Protection rating: IP68
 (EN 60529)

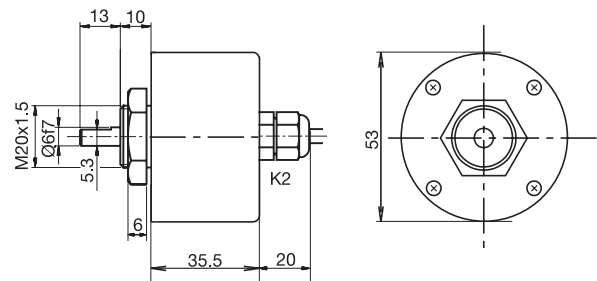
Operating temperature: -20... +80 °C
 Storage temperature: -30... +80°C

Electrical Data

Power supply	Output circuit	Key	Output circuit*	Key
10-30 VDC	HTL	G24	HTL, inv.	I24
5 VDC	TTL	G05	RS422, TTL comp.	I05

*Only for cable or connector: K2, L2, SB8, SB12

Cable connection K2



Options:
Cable length:

The encoder WDG 53V can be supplied with more than 2 m cable.
 Please extend the standard order code with a three figure number,
 specifying the cable length in decimetres.

All dimensional specifications in mm.

Further technical information on www.wachendorff.de/gtd
 Matching accessories on www.wachendorff.de/acs

Ordering information:

Output circuit: G24 = 10-30 VDC, HTL G05 = 5 VDC, TTL	Output circuit inv.: I24 = 10-30 VDC, HTL I05 = 5 VDC, RS422 TTL comp.	Electrical connections: Cable: K2 = axial, 2 m, shield not connected (standard) L2 = axial, 2 m, shield connected to encoder housing Please note the connection configuration under "General technical data", Page 122	Options: Empty = without option Cable length = in decimetres
Channels: AB, ABN			
Pulses per revolution: 4, 9, 10, 15, 20, 25, 28, 30, 36, 40, 50, 60, 90, 100, 120, 125, 128, 150, 160, 180, 200, 235, 250, 300, 314, 318, 360, 400, 500, 600, 625, 635, 720, 900, 1000, 1024, 1080, 1200, 1250, 1500. Other PPR's on request			

Order No.:						
Example	WDG 53V	500	ABN	G24	K3	
Your encoder	WDG 53V					